

# SAVE THE DATE

**MSP**  
THE COURSE on  
MUSCULOSKELETAL PATHOLOGY

## XXXV Course on MUSCULOSKELETAL PATHOLOGY

**May 15-18, 2024**

**Istituto Ortopedico Rizzoli - Bologna, Italy**

*Course Organizers*

**Davide M. DONATI**, M.D. *Orthopaedic Oncology*

**Marco GAMBAROTTI**, M.D. *Pathology*

**Eric L. STAALS**, M.D. *Orthopaedic Oncology*

**Tommaso FRISONI**, M.D. *Orthopaedic Oncology*

*Department of Musculoskeletal Oncology,  
Rizzoli Orthopaedic Institute, Bologna, Italy*

*Invited Speaker*

**Lee JEYS**, M.D. *Orthopaedic Oncology*

*Royal Orthopaedic Hospital NHS, Birmingham, UK*

[www.musculoskeletalpathologycourse.it](http://www.musculoskeletalpathologycourse.it)



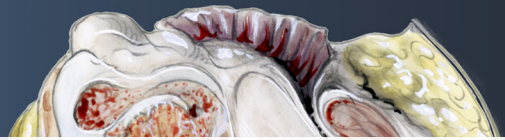
SERVIZIO SANITARIO REGIONALE  
EMILIA - ROMAGNA  
Istituto Ortopedico Rizzoli di Bologna  
Istituto di Ricovero e Cura a Carattere Scientifico



Promoted by:



ASSOCIAZIONE  
MARIO CAMPANACCI



## AIM OF THE COURSE

The Course consists in a 4-day update on management of bone and soft tissue tumors with particular emphasis on clinico-pathologic and radiographic correlations including practical studies under microscope. It is addressed to orthopaedic surgeons, oncologists, pathologists, radiologists and basic researchers to improve their knowledge and competence in these pathologies by working in multidisciplinary teams.

The format includes interactive sessions for questions, case presentations and an early morning interactive session of multiple choice questions reviews the topics previously discussed. The last day participants are grouped in multidisciplinary teams to discuss a clinical case. The best teams are awarded a prize.

## SITE

Istituto di Ricerca Codivilla-Putti, Via di Barbiano 1/10, Bologna, Italy  
(can be easily reached by bus A from railstation and town center)

**Start:** Wednesday, 15<sup>th</sup> May at 11.00

**End:** Saturday, 18<sup>th</sup> May at 13.00

## REGISTRATION FEE

The registration fee covers:

- admittance to the scientific session and final program
- refreshments during break and lunches
- certificate of attendance

	<b>Early Registration until February 29<sup>th</sup> 2024</b>	<b>Late Registration from March 1<sup>st</sup> 2024</b>
▪ Regular	450,00 €	550,00 €
▪ SIAPEC Member	360,00 €	460,00 €
▪ Resident	200,00 €	300,00 €
▪ SIAPEC Resident	160,00 €	260,00 €
▪ UNIBO Residents, PhD Students, International Fellows of the IOR Orthopaedic and Traumatology Clinic III (Oncology)	100,00 €	200,00 €

All prices are VAT included

The registration and payment forms will be available online at  
[www.lcfcongress.com/eventi/xxv-course-on-musculoskeletal-pathology-451/](http://www.lcfcongress.com/eventi/xxv-course-on-musculoskeletal-pathology-451/)

## ORGANIZING SECRETARIAT

**LCF CONGRESS FACTORY S.R.L.**

[www.lcfcongress.com](http://www.lcfcongress.com)

e-mail: [info@lcfcongress.com](mailto:info@lcfcongress.com)

Cell +39 340 6672064

Phone: +39 0532 1883439

## OFFICIAL LANGUAGE

English